

VC-A20P

High Definition PTZ IP Camera

LumensTM
Brilliance by Design

The LumensTM VC-A20P HD Pan/Tilt/Zoom (PTZ) IP camera is equipped with a professional 1/2.8 inch image sensor with Full HD 1080p output at 60 frames per second. The superior 10x optical zoom lens, excellent white balance, and exposure mode delivers a clear image even in low light or the extreme contrast of brightness and darkness in a lecture hall. The camera covers a wide shooting angle and achieves high-speed, quiet, and precise positioning with smooth PTZ operations.

The VC-A20P has different interfaces like Ethernet, DVI-I, and C-Video and it also supports live broadcasting with H.264/MJPEG format further more its low-latency less than 150ms. These features not only allow for simultaneous image outputs, they also result in the best image quality and is compatible with all video equipment.

The VC-A20P is ideally suited for lecture recording, videoconferencing, and live broadcasting.

Key Features

- Full HD 1080p high definition signal output format with a high frame rate of 60 fps
- 10x optical zoom
- Support live broadcasting (H.264/MJPEG format, SVC and ONVIF protocol)
- Low latency (< 120 ms)
- Ethernet, DVI-I, and C-Video image outputs synchronously
- Maximum horizontal/vertical speed of rotation: 120 degrees/second
- Audio Input Support AAC encoding with 44.1/48 K sampling frequency
- Built-in image flip and mirror function for easy installation
- Free Lumens VMS software for controlling the cameras remotely



More Details

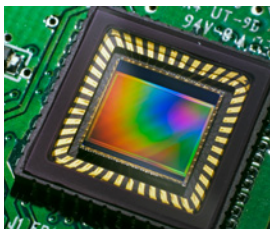


Image Quality

The VC-A20P is equipped with a professional 1/2.8 inch image sensor with Full HD 1080p output resolution. The sensor provides high color reproduction, high-definition signals, and crystal-clear image quality.



Ethernet Interface

The VC-A20P supports a H.264/MJPEG video compression format that can reduce the bandwidth for transmitting video. This technology decreases hard disk space when recording. In addition, these cameras have the ability to distribute streaming medias while supporting SVC/ONVIF protocol.



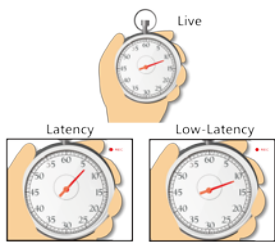
Multiple Signal Interface Formats

The VC-A20P is able to switch video output formats from NTSC/PAL, SD, to Full HD for compatibility in various display devices.



Wide Range Pan/Tilt/Zoom Action

The VC-A20P has a wide shooting area (pan angle from -170° to +170° ; tilt angle from -30° to +90°), as well as quiet, fast, and precise positioning movements.



Low-Latency

The VC-A20P supports low-latency and the fast response time is less than 120 ms that allows human-unnoticeable delays between live image and its output on the screen.



Audio Input Support

The VC-A20P supports stereo audio input and AAC encoding transmission through the Internet to extend the distance of the audio device. Through this transmission, sound quality is enhanced and installation costs are reduced.



Image Flip

The VC-A20P has built-in image flip and mirror functions that allow various installations on a desktop or mounting on the ceiling depending on the users' requirements.



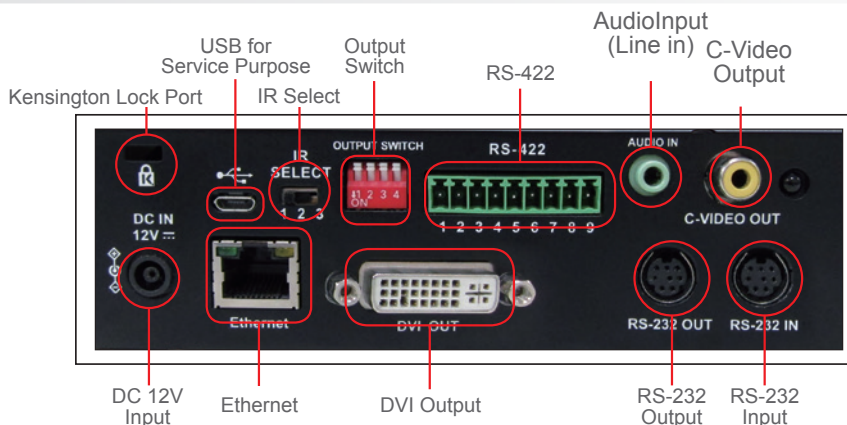
RS-232/422 Remote Control

The camera's settings and PTZ control functions can be performed remotely at any location and at high communication speeds via the RS-232/422 interface.

Product Specifications

Sensor	1/2.8" 2 MP CMOS	Horizontal Viewing Angle	56.5°
Video Output	1080p 60 / 59.94 / 50 / 30 / 29.97 fps, 1080i 50 / 60 fps, 720p 60 / 50 fps, NTSC / PAL	Aperture	F1.8 ~ 3.0
Optical Zoom	10x	Minimum Illumination	1.0 lux (F1.8, 50IRE, 30fps)
Panning Angle	-170° ~ +170°	Minimum Object Distance	100(Wide) ~ 1000(Tele) mm
Tilting Angle	-30° ~ +90°	Gain Control	Auto, manual
Preset Positions	128	White Balance	Auto, indoor, outdoor, one-push, manual
Video Output(HD) Interface	DVI-I, Ethernet	Exposure Control	Auto, manual
Video Output(SD) Interface	CVBS (C-Video)	Focus System	Auto, manual
Network Interface	ONVIF / RTSP Streaming / RTMP Streaming	Image Flip	Yes
Camera Control Interface/Protocol	RS-232 / RS-422 / Ethernet	Audio Input (Line in)	Yes
Video S/N Ratio	> 50dB	Weight	1.8 kg (4.0 lbs)
Shutter Speed	1/1 ~ 1/10,000 sec	Dimensions (W x D x H)	174 x 174.4 x 182.6 mm (6.9" x 6.9" x 7.2")
Focal Length	f = 5 ~ 50 mm		

I/O CONNECTIONS



LumensTM
Brilliance by Design
www.MyLumens.com

Lumens Integration, Inc.
4116 Clipper Court
Fremont, CA 94538
Phone : 888.542.3235
Fax : 510.252.1389

Lumens Europe
Stationstraat 5
1730 Asse, Belgium
Phone : +32 (0) 2 452 76 00
Fax : +32 (0) 2 452 76 00